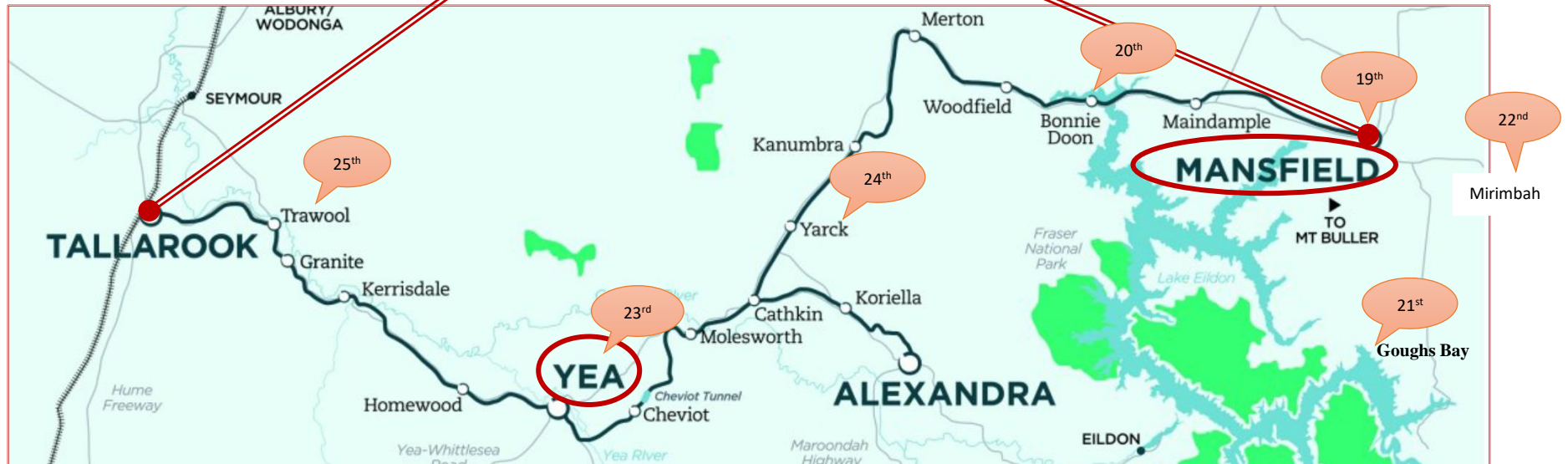


Alan and Mary Capell's Victorian Adventure

Sunday 19th to Tuesday 28th March 2017

Great Victorian Rail Trail

◀ click heading for video



Ride Program High Country Tour

19th to 28th March 2017

Mt Buller [MTB map](#)

<p>Sun 19th Arrive Mansfield Holiday Park 8 Timothy Lane, Mansfield, Victoria, 3722 http://www.mansfieldholidaypark.com.au/ Manager: Matt Leggett, Phone: (03) 57751383 Email: info@mansfieldholidaypark.com.au</p>	<p>Fri 24th Ride on rail trail to Yark, through long tunnel Café for lunch</p>
<p>Mon 20th Ride down rail trail to Bonny Doon Café at lunch stop</p>	<p>Sat 25th Ride rail trail to Trawool Café for lunch</p>
<p>Tue 21st Ride loop down to Lake Eildon, Goughs Bay</p>	<p>Sun 26th Drive 135km to Big 4 Bendigo Ascot Park 15 Heinz St, White Hills VIC 3550, Phone: 1800 062 340 Web: http://www.big4bendigo.com.au/ Email stay@big4bendigo.com.au</p>
<p>Wed 22nd Ride to Mirimbah at the bottom of Mt Buller. Ride up if feeling fit, Café at start of climb, maybe some delatite trail is an option. The whole Delatite Creek Trail Video by regular racer at speeds we wouldn't attempt.</p>	<p>Mon 27th Ride as much of the O'Keefe rail trail as you feel comfortable to do, it is an out and back ride. There are places to eat at Axedale (Halfway) and Heathcote (End of Trail) A video of the whole O'Keefe Rail Trail</p>
<p>Thu 23rd Drive to Yea Riverside Caravan Park Web: http://www.yeariverside.com.au/ 1, Court Street, Yea, Victoria.3717 Phone: 0357972972 Email: stay@yeariverside.com.au</p>	<p>Tuesday 28th Go Home</p>

		SUN 12 MAR	MON 13 MAR	TUE 14 MAR	WED 15 MAR	THU 16 MAR	FRI 17 MAR	SAT 18 MAR
Budget Ensuite Cabin - Standard rate Max 3 guests	+ More	\$90	\$80	\$80	\$80	\$80	\$80	\$80
1 nights								
Deluxe 2 Bedroom Cabin - Standard rate Max 5 guests	+ More	\$140	\$110	\$110	\$110	\$110	\$110	\$110
1 nights								
Miners Cottage - Standard rate Max 7 guests	+ More	\$160	\$130	\$130	\$130	\$130	\$130	\$130
1 nights								
Powered Site - Standard rate Max 4 guests	+ More	✕	\$35	\$35	\$35	\$35	\$35	\$35
1 nights								
Standard Budget Cabin - Standard rate Max 6 guests	+ More	\$80	\$70	\$70	\$70	\$70	\$70	\$70
1 nights								
tent sites - Standard rate Max 4 guests	+ More	\$40	\$30	\$30	\$30	\$30	\$30	\$30
1 nights								

MANSFIELD HOLIDAY PARK ◀ [Click Here](#)

Four nights Arriving Sun19th Departing Thu 23rd March

Mansfield's premier caravan park is located on Mount Buller Road. Set on 17 acres, they have great rural and mountain views and they are the gateway to Mount Buller and the Victoria's High Country, with just a short drive to Lake Eildon.

Mansfield Holiday Park offers you large sites, spread out so you are not crammed in like at other parks. They even have drive through site for the 'Big Rigs'.

They have modern amenities and great family facilities such as their pool, pirate ship playground, 18 hole mini golf, barbecues and a campers' kitchen.

They provide spacious two bedroom cottages, ensuite cabins and standard budget cabins, as well as bunk house style accommodation for schools and other groups of six or more people

The Mansfield area offers excellent activities such as snow skiing, four wheel driving, motor cycling, fishing, water skiing, horse trail rides, touring the local wineries or the many festivals that happen all year round.

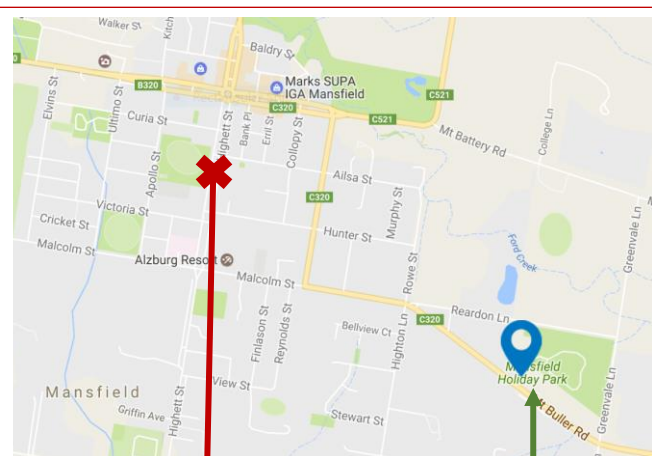
Miners Cotage Two bedroom, fully self contained cottages with large living area. Sleeps up to seven. Queen bed in main bedroom. Tri-bunk (double bed below and single bed above) in second bedroom plus double sofa bed in lounge. All linen, bedding and towels included. Reverse cycle air conditioning. Dishwasher. \$130 - \$150

Deluxe Two Bedroom Cabin New cabins. Sleeps up to 5. Queen bed in main bedroom. Tri-bunk (double bed below and single bed above) in second bedroom. Full bathroom. Includes all bedding, linen and towels. \$110 - \$140

Budget Ensuite Older cabin. Lounge/kitchen and a **single bedroom** with a queen size bed. Also a small sofa bed in lounge for extra person. Heaters but no air conditioning. Bedding/linen/towels available for a fee. \$80 - \$90

Bunk House Separate bedrooms open up onto a verandah. Each room has its own key. Small kitchen. Each bedroom sleeps 2 people - set of bunks. \$40

Standard Budget Cabin A Cabin for the budget conscious. Kitchen area. Double bed and two sets of bunks all in one room. Sleeps up to six people. Air conditioning. No ensuite. \$70 - \$80



NOT High Country Holiday Park

Book at Mansfield Holiday Pak

[YEA Riverside Caravan Park](#) ◀ [Click Here](#) **Four nights Arriving Thur 23rd Departing Sun 26th March**

(Please note The Family Park that still exists on a web site is now all the Yea riverside Caravan Park)

2 Bedroom Villas



BASE TARIFF

\$125 Mon – Thur

ADDITIONAL

\$140 Weekends

\$20 extra adult

\$10 extra child

Enjoy the wonderful accommodation available in our brand new, comfortable and well-appointed **2 bedroom villas**. Up to 6 guests can stay in the combination of one queen size bed and 2 sets of bunks with all linen supplied for your convenience. Modern shower and toilet facilities complete the package and offer everything you need for a great stay

BEDDING CONFIGURATION

- Queen bed in main bedroom
- Two sets of double bunks in 2nd bedroom
- All linen supplied

Studio Units



BASE TARIFF

\$105 Mon – Thur

ADDITIONAL

\$120 Weekends

\$20 extra adult

\$10 extra child

Each of our brand new Studio units is outfitted with a queen bed and all linen as well as a modern bathroom. A convenient kitchenette comes with cooking and eating utensils and a bar-sized fridge. Air conditioning maintains the perfect environment and you can enjoy all the comforts of home with a large TV and free Wi-Fi

BEDDING CONFIGURATION

- Queen bed all in one room
- All linen supplied

Powered Sites



BASE TARIFF

\$34 double per night

ADDITIONAL

\$10 extra adult

If you dream of camping or caravanning along the banks of a scenic river then the clean, level, shady powered sites here at Yea Riverside Caravan Park are your ideal destination. For a short stop-over or an extended stay, you can't beat the location, amenities and hospitality you will find with us. We even invite you to bring your pet

BIG4 Bendigo Ascot Holiday Park

◀ Click here Two nights Arriving Sun26th Departing Tue 28th March

On the way home

We break the long journey and stay one nights in Bendigo and ride the O'keefe Rail Trail

Big 4 Bendigo Ascot Park FREECALL1800 062 340 15 Heinz St, White Hills VIC 3550, Australia	From	Extra Adult
Deluxe 3 BR Unit 7 Berth	\$225 - \$245	\$15
Villa 3 BR Unit 6 Berth	\$205 - \$215	\$15
Holiday 3 BR 6 Berth	\$175 - \$185	\$15
Holiday 2 BR 6 Berth	\$165 - \$175	\$15
Holiday 2 BR 5 Berth (Disabled)	\$160 - \$170	\$15
Villa 2 BR Unit 6 Berth	\$155 - \$165	\$15
Villa 2 BR Unit 4 Berth	\$135 - \$140	\$15
Villa 2 BR Unit 4 Berth	\$135 - \$140	\$15
Family 2 BR 4 Berth	\$130 - \$135	\$15
Cottage 1 BR	\$120 - 125	-
Studio Open Plan	\$110 - \$115	-
Budget Family	\$98 - \$103	\$10
Ensuite Powered Site	\$50 - \$55	\$10
Powered Site	\$37 - \$40	\$10

CONTACT US	Neil & Karen Williams invite you to discuss your accommodation needs with us and our helpful staff
Email:	stay@big4bendigo.com.au
Phone:	1800 062 340
Address:	15 Heinz Street Bendigo 3550 Victoria, Australia

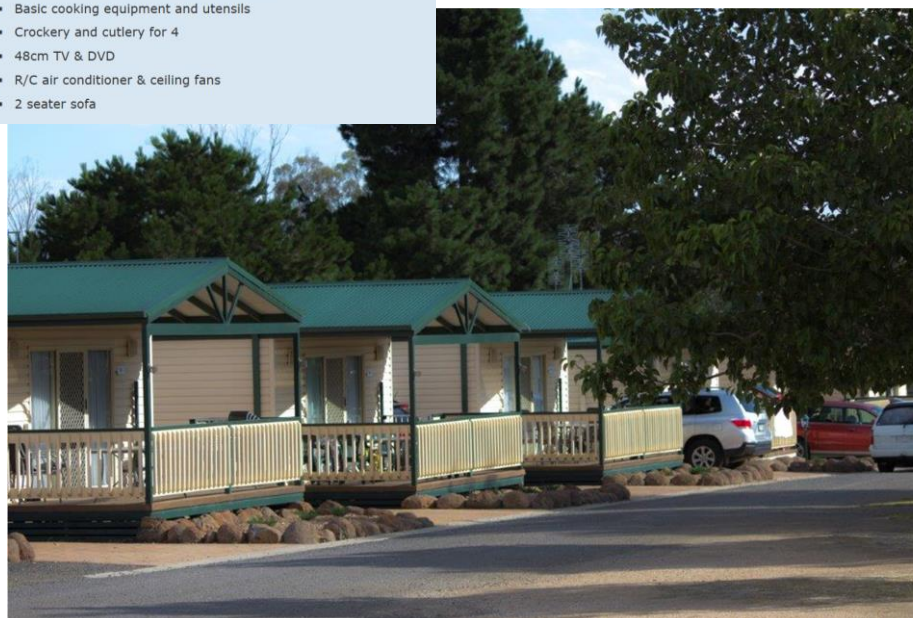
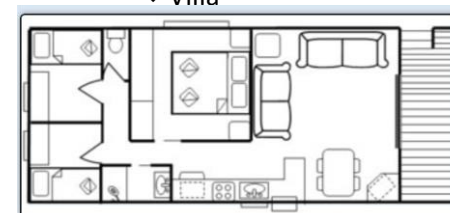


FAMILY Maximum 4 persons

- 2 separate bedrooms
- Queen bed with extra tv in main bedroom.
- 1 set of double bunks with inner spring mattresses(or double bed)
- Top bunks fold up when not in use
- Queen, Double & lower level bunks have electric blankets
- Linen, bedding and towels provided for ALL beds
- En-suite bathroom - IXL tastic
- Iron & ironing board
- Kitchen with cooktop, fridge &, microwave
- Basic cooking equipment and utensils
- Crockery and cutlery for 4
- 48cm TV & DVD
- R/C air conditioner & ceiling fans
- 2 seater sofa

Accommodation Choices Galore

- ◀ Deluxe
- ◀ Family
- ▼ Villa



O'Keefe Rail Trail: [click here for video](#)

