

NEW ZEALAND 2024

My guesstimate is **\$1300 each for Accommodation and Land Transport** – you organise and pay your own Air Fares, and any optional activities.
 Bikes you can bring your own box 80cmX144cmX31cm 23kg \$70 each way (but not with a Li-ion Battery); eBike rentals about NZ\$1,000 per 14 days.
 Buy an e-Bike & take home. (Save >\$1000 on hire, gain 7% exchange, lose \$600 AU battery, 32kph? Try [EVO Cycles](#)). Other costs are kitty-based Group Meals.

Accommodation location proposed (<i>suggestions only 7 locations</i>)		vehicle Kms 2680	Booking Details at 6 locations
Wednesday, 21 February 2024	Tasman Holiday Park Christchurch	200	Tasman Holiday Park Christchurch 21 st , 22 nd , February 4 th , 5 th , March
Thursday, 22 February 2024	Tasman Holiday Park Christchurch	120	
Friday, 23 February 2024	Hokitika Jade Court	290	Hokitika Jade Court 23 rd , 24 th , February
Saturday, 24 February 2024	Hokitika Jade Court	120	
Sunday, 25 February 2024	Wanaka Top 10 Holiday Park	420	Wanaka Top 10 Holiday Park 25 th , 26 th , February
Monday, 26 February 2024	Wanaka Top 10 Holiday Park	20	
Tuesday, 27 February 2024	Clutha Gold Cottages only single night	130	Clutha Gold Cottages 27th February
Wednesday, 28 February 2024	Te Anau Lakeview Kiwi Holiday Park	220	Te Anau Lakeview Kiwi Holiday Park 28 th , 29 th , February
Thursday, 29 February 2024	Te Anau Lakeview Kiwi Holiday Park	240	
Friday, 1 March 2024	Queenstown Lakeview Holiday Park	170	Queenstown Lakeview Holiday Park 1 st , 2 nd , 3 rd , March
Saturday, 2 March 2024	Queenstown Lakeview Holiday Park	60	
Sunday, 3 March 2024	Queenstown Lakeview Holiday Park	140	<i>Rules of Accommodation:</i>
Monday, 4 March 2024	Tasman Holiday Park Christchurch	490	<i>No Bunk Beds, 4 persons per unit, 4 per bathroom allocation.</i>
Tuesday, 5 March 2024	Tasman Holiday Park Christchurch	60	<i>Close units with central Kitchen meeting area.</i>

Rides Proposed

Date:	Ride offered (we have done it before in Red new shaded green)	Ride reduced
6pm Wednesday, 21 February 2024	Arrival date if early review Christchurch bike trails	Your choice
Thursday, 22 February 2024	1. Little River Trail out and back 120km Video 1	Half drive out swap keys 60km
Friday, 23 February 2024	2. Moana (lake Brunner) to Greymouth to Kumara 66km	Stop at Greymouth 40km
Saturday, 24 February 2024	3. Westcoast Wilderness Trail 67km Video 2	Ride Milltown Hokitika 36km
Sunday, 25 February 2024	4. Haast Pass to Hawea to Wanaka 82km Video 3	Ride Hawea loop 34km
Monday, 26 February 2024	5. Wanaka to Luggate bridge to Wanaka 45km Video 4	Ride out and back Glendhu 32km
Tuesday, 27 February 2024	6. Lake Dunstan Trail to Clyde to Alexandra 65km Video 5	Ride only Dunstan Trail 55km
Wednesday, 28 February 2024	7. Roxburgh to Beaumont 45km and Manapouri to Te Anau 42km Video 6	Ride only Manapouri Te Anau 42km
Thursday, 29 February 2024	8. Homer to Milford 17km and Divide Routeburn to Te Anau 85 km Video 7	Ride only Homer to Milford 17km
Friday, 1 March 2024	9. Centre Hill to Mossburn to Kingston 45km and 50km Video 8	Ride 5 Rivers to Kingston 41km
Saturday, 2 March 2024	10. Gibbston to Arrowtown to Queenstown 26km and 30km Video 9	Ride Gibbston to Arrowtown 24km
Sunday, 3 March 2024	11. Routeburn to Glenorchy 25km Glenorchy to Queenstown 46km Video 10	Ride only to Glenorchy 25km
Monday, 4 March 2024	12. Driving to Christchurch. Maybe: A20 Sailors to Benmore 17km 3hr Video 11	No ride
Tuesday, 5 March 2024	13. Figure 8 loops of Christchurch 83km Video 12 ✓ Video 13 X	Ride only city loop 51km

Optional Highlights for Tourists (*the deliberate plan is to create a program that makes available desirable alternatives to riding. You tell us but book your own.*)

Date:	Videos	Adventure optional	Alternative adventures & fishing?
Wed, 21 Feb		Just arrival and getting your gear ready	Your choice
Thu, 22 Feb	ChCh Gondola	Go up on the Gondola	Take bus 28 and explore the city
Fri, 23 Feb	Trans Alpine	Trans Alpine Express Scenic Rail Railway Railroad East West	Bush walk Arthurs pass & shanty town
Sat, 24 Feb	Gorge, treetops	Treetops Walkway, Hokitika River gorge, Lake kaniere	Hokitika Jade and artists
Sun, 25 Feb	AlpsFlight or Drive	Full Scenic flight Franz to Wanaka	Walk to Franz Glacier, waterfalls, blue pools
Mon, 26 Feb	Wanaka & more	Lake cruise, Jet boat, exquisite Wanaka village, big hike Breast Hill Track	National Transport Museum, Puzzling World
Tue, 27 Feb	Highlands	Cromwell Heritage Precinct Visit Highlands Motorsport.	Jones Fruit Stall . Clyde & Alexandra quaint towns
Wed, 28 Feb	gloworm & Birds	Roxburgh Art gallery, Te Anau bird sanctuary & Glow Worms	Scenic Tourism
Thu, 29 Feb	Milford Cruise	Routeburn Track from the Divide to Routeburn shelter over 3 days	Visit Milford, if 6 take an overnight cruise
Fri, 1 Mar	Routeburn track	Routeburn Track from the Divide to Routeburn shelter over 3 days	Visit lake Mavora loop bush walk,
Sat, 2 Mar		Routeburn Track from the Divide to Routeburn shelter over 3 days	Queenstown or join bus to Gibbston & Arrowtown
Sun, 3 Mar	Paradise zip or horse	A day walk on the Routeburn track or Paradise Zipline	Queenstown or join bus to Glenorchy
Mon, 4 Mar		Driving to Christchurch one bus leaves 7am re cycling Benmore	Driving to Christchurch one bus stops more often
Tue, 5 Mar	Christchurch & Christchurch	A day in Christchurch to do whatever you choose Botanic Gardens, Canterbury Museum, Art Gallery, Cathedral Square. Cardboard Cathedral, Antarctic Centre, Willowbank Wildlife, Orana Wildlife, Wiapara Winery trail, many more	

Perfect participant Nos: 4 couples, 4 single males, 4 single females i.e., **16 total** or 6 couples 6 single males, 6 single females i.e., **24 total**. participants but unlikely
Accommodation planning: 2-bedroom cabins are bedroom 1, queen bed and bedroom 2, two single beds and a bathroom for four persons.

Vehicle Booking: Find 1 or 2 twelve bike Trailers flatbed style to easily load eBikes.

Instead of people mover perhaps hire Minibus with 5 seats (7 seats removed or not used for people) and all luggage in rear. vehicle needs tow bar for 4-bike tray.

NEW ZEALAND 2024

What is different... **eight new rides two nights** or more at all but one accommodation; **a focus** on the participants who accompany us with comprehensive **non-rider activities** and options. An adventure to the South of (South Island) New Zealand. Short riding options planned.

Christchurch start day 1:

Riders: [Little River Trail](#) **120km** return, flat ride, farming country, on old railway line (or 60 km with vehicle swap).



Tourists: Take bus 28 to City morning 3-hour amble of the city centre treasures walk or take a tram tour. Return to bus stop catch bus 28 to Gondola return via bus 28 choose a meal in city or back to camp,



Christchurch finish and start day 2:

Riders: Ride from Lake Brunner to Greymouth 40km 215m climb 338m downhill sealed and unsealed roads then Westcoast Wilderness Trail 36 km Flat to Kumara, total **76km** (or drop out at Greymouth 40km)



Tourists: If you desire luxury the fabled TranzAlpine or a self-drive tour Arthurs pass Devil's Punchbowl walk, visit to Shanty Town...

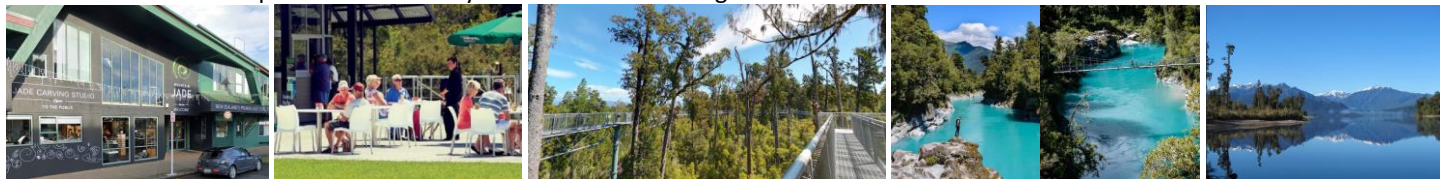


Hokitika finish and start day 3:

Riders: Ride is Kumara to Hokitika Westcoast Wilderness Trail **72km** climb 250m in first 28 km mostly downhill to Hokitika.



Tourists: The morning is for exploring Hokitika a town well know for Artists and Jade(Pounamu). The rest of the day is a visit to and lunch is at Westcoast Tree Tops Walk followed by a visit to Hokitika Gorge then Lake Kaniere.



Hokitika finish and start day 4:

Riders: Big day early start 7am drive 364 km to Haast Pass release riders to ride sealed road to **82 km** to Wanaka expect to be at Haast Pass at midday. 65km from Haast Pass at Hawea optionally turn onto the [Hawea River Tack](#) & [review](#).(or choose 65 km or 17 km rides)



Tourists: 7am start. At Franz Joseph Glacier car park 1.5hrs to return walk to glacier face. Fox Town for morning tea at 10.30 on to knights Point and Haast for lunch [Hard Antler](#). Then to the blue pools 1hr return walk. View many waterfalls, stop if you are on schedule. Option for 7 is to fly [full Scenic Franz to Wanaka](#) (bad weather policy is you only pay if you fly) Charter \$2310 divided by 7 \$330ea



Wanaka finish and start day 5:

Riders: pick a trail, this day there are choices. Basic offer is a **50km** ride out on Luggate trail cross the river and back on the Newcastle track. Perhaps out & back to Glendhu Bay 32km on trail, or the Outlet track, a 40 km loop or All of the above. (or choose shorter ride)



Tourists: [Cruise](#) on the lake, walk the foreshore or a visit to the town of Wanaka its shps and galleries OR maybe one of the [adventures](#) perhaps a jet boat adventure on the Clutha river, or just a 4.5km walk up Mt Iron its on the fringe of the Town.

The National Transport Museum or even the Puzzling World of tilting houses



Wanaka finish and start day 6:

Riders: start 8.15am drive to Smiths Way ride the Dunstan Trail 55km. Sections 16km to Cromwell Heritage Precinct for Morning tea, lunch at [Coffeeafloat](#) 21km from Heritage Precinct (phn booking), then Afternoon tea 22km to Clyde. Anybody who is not tired or flat battery rides 12km Clyde to Alexandra 150th Aniversary Trail to [Courthouse Cafe](#) Total **67km**. (or only 66km Dunstan Trail)

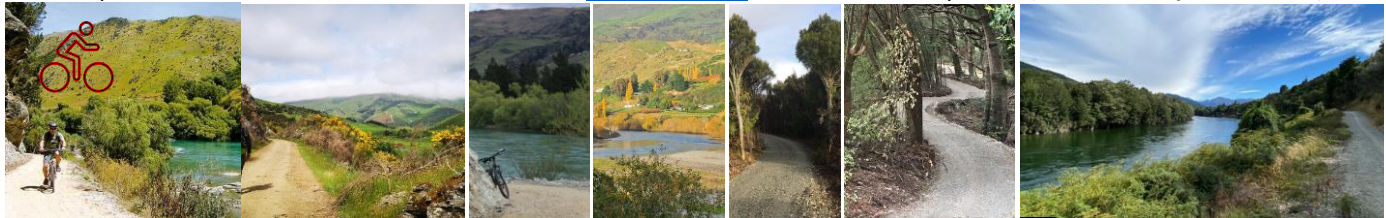


Tourists: Visit [Cromwell Heritage Precinct](#) for Morning tea, Visit [Highlands](#) and Exceptional Motorsport and great lunch café visit Their neighbours [Jones family Fruit Stall](#). Then drive to Clyde quaint Historic town centre to Alexandra then pickup riders to Roxburgh.



Roxburgh finish and start day 7:

Riders: Depart from Clutha Gold Cottages 8am ride 42km to Beaumont on the Clutha Gold Trail picked up at Belmont 11am drive to lake Manipouri 193km 2½ hrs disembark riders to ride [Lake2Lake trail](#) 36km Total for day **78km** (or select one of the two rides)



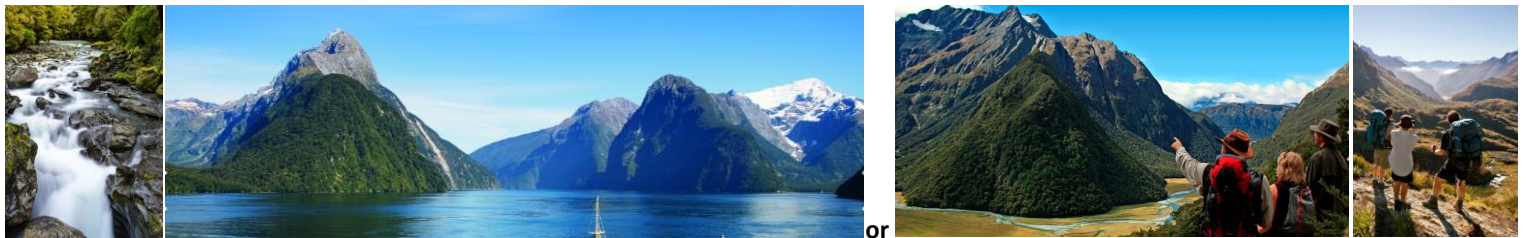
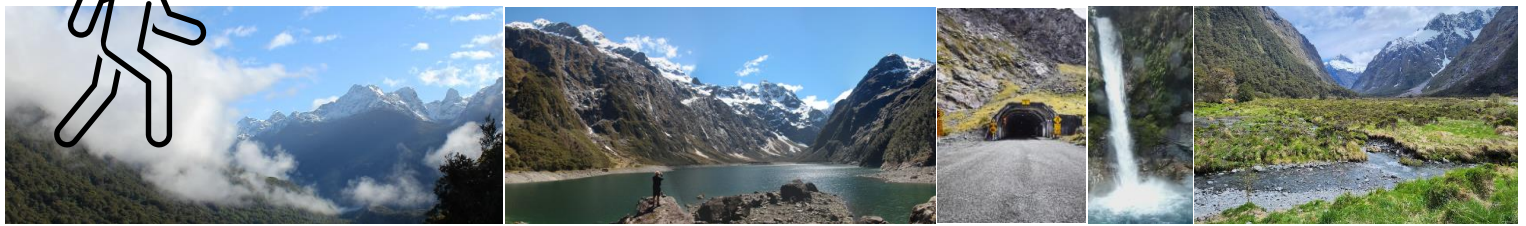
Tourists: Start the Day with a coffee shop next an Art gallery in Roxburgh Town Thats it. We flash past villages and orchards see a river alongside and reach the Beaumont Hotel and collect the riders. Then 115km later through some of the worlds most productive farmland we reach Lumsden we stretch our legs and off to the beatiful Manapouri walk about then to Te Anau



Shelter. Riders disembark for a stunning seal road ride 84km 80% downhill to Te Anau, day total **101km**. (or choose homer/milford only)



Tourists: **WOW** have you got a big day the road trip alone, Mistletoe Lake, Te Anau Downs, Eglington Valley, Mirror Lakes, Lake Gunn Walk, Key Summit Hike, Pops View, Lake Marion, Homer Tunnel, Water falls, Monkey Creek, The chasm, 2 hour milford sound cruise, and more but there is only one day day to take it all in and return late to Te Anau. Maybe evening glowworm caves or Walk the [Routeburn Track from the Divide to Routeburn](#) shelter [over 3 days](#) ^{* video} – we meet walkers day 11 or they [bus to Queenstown](#)



Te Anau finish and start day 9

Riders: Start 8am drive 57km to Mossburn. Ride **75km** [Around the Mountains trail](#), coffee 34km [5 rivers](#) then [Kingston](#) (or half ride)

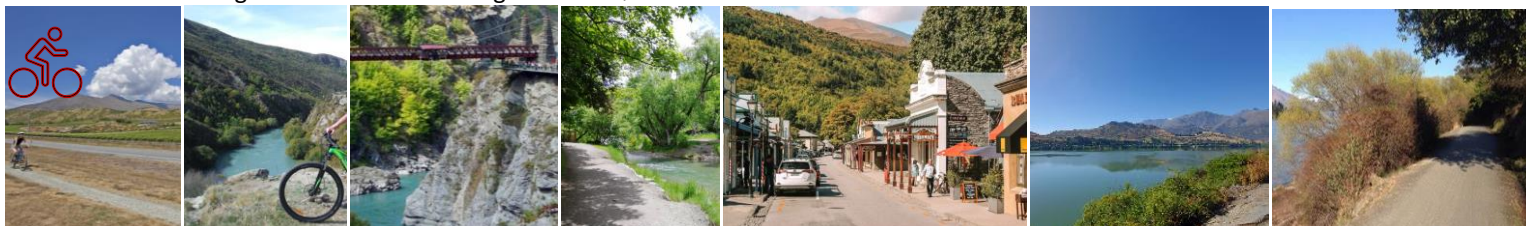


Tourists: Start the Day with a morning walk to bird sanctuary or an out and back on the Kepler track. Optional a drive to Mavora Lake 66km (that's if you havent had a scenery overdose) the drive to Queenstown is already 173km. perhaps a ride on the Kingston Flyer Steam Train or maybe just get to Queenstown Adventure Capital of the World.



Queenstown finish and start day 10

Riders: Drive 28km start 8.30 morning tea [Cargo Cellar Door Gibbston valley](#) Ride 8.5km Gibbston trail over Kawarau Bungy Bridge then 13km to Arrowtown for lunch. 5km Countryside Trail, Rutherford Rd then Lake Hayes full loop 8km, back on Countryside Trail 8km to Old Shotover bridge 7km to Kawarau Bridge 9km to Queenstown a total ride of **59km**



Tourists: Choice you are in Queenstown, reseach every adventure available. Otherwise meander through the Gibbston wineries, lunch and Shop in Arrowtown, have a walk along Lake Hayes, wander Queenstown and Gardens, take a Gondolla ride walk down.



Queenstown finish and start day 11

Riders: Drive 71km to Routeburn. We all do a short Routeburn track walk then ride to 25km Glenorchy for lunch. Pelaton ride 46km to Queenstown, we need to be vigilant the motorists are distracted by scenery, road is good. Total **71km** (or only ride to Glenorchy)



Tourists: You can stay in [Queenstown and create your own adventure](#) or Drive to Routeburn enjoy a track walk then return to the quaint village of Glenorchy



Queenstown finish and start day 12

Tourists we all start at 8am 174km Omarama Morning tea, 172km Geraldine Bakers Lunch, 87 km via Thompson track to Rakia and on 63 km to Tasman holiday Park Christchurch. Total 496km all going to plan the drive is 6 hours with 2 hours stops we will arrive 4pm.

Bonus for Riders we
Start 7am and squeeze
in 3 hr Sailors Cutting
17km spectacular A2O
challenging ride. Arrive
late 6pm



Christchurch finish and start day 13

Riders: we [circumnavigate Christchurch](#) out to Kaiapoi 15km, ride back to south side Waimakariri bridge turn left under bridge and join the [Otukaikino Track](#) to Groynes access road to Johns Rd Shared path ride south west to Gardiners Road to Sawyers Arms Road to Railway line trail turn South ride turn East into Matai St. Reach Hagley park ride the Southern boundary of Hagley Park turn East at Park end and ride Moorhouse Ave to Quarymans Trail Cycleway turn South East when intersecting NorWest Arc Cycleway then Cashmere Rd trail and road to Centaurus Rd to Ansley tce cross Heathcote river and shared path to Garlands Rd to Rutherford St right to Ferry Rd Left to Humphreys Drive onto Lynwood cycleway right to Dyers rd on to Bexley Rd shared path Right to Pages Rd then Te Ara Otakaro Avon River Trail to Hagley Park cross park to Matai St the railway to home. **82km** (or ride only Kaiapoi 34km or City 50km loops)



Tourists: You have a day in [Christchurch to do whatever you choose](#) Botanic Gardens, Canterbury Museum, Art Gallery, Cathedral Square. Cardboard Cathedral, Antarctic Centre, Willowbank Wildlife, Orana Wildlife, Wipara Winery trail, many more.



Christchurch finish and start day 14

Go Home or stay a little longer, hire a camper for a week perhaps – just do your own thing 😊